



CLAYTON COUNTY
TRANSIT INITIATIVE

CLAYTON COUNTY TRANSIT INITIATIVE

Technical Advisory Committee/
Stakeholder Advisory Committee Webinar

August 29, 2017



PLANNING



CLAYTON COUNTY TRANSIT INITIATIVE

- Welcome!
- Introduction of Speakers
- Webinar Housekeeping
- Project Overview & Status
- Public and Agency Outreach Feedback
- Project Survey Results
- Purpose & Need
- Summary of Key Findings/Next Steps
- Q&A



CLAYTON COUNTY TRANSIT INITIATIVE

- **Over 100 invitees**
 - Community leaders, project stakeholders, federal/state/local agency representatives
- **Audio muted (except speaker)**
 - Type in comments/questions at any time in the webinar chat box
 - Note slide number if you need us to refer back
- **Q&A at end of presentation**
 - We will answer questions in the order received
- **Webinar Recording**
 - We will provide a recording to all who request it
 - We will also provide responses to any questions we can't get to today
- **Quick Poll**
 - Please respond to a few questions following the presentation



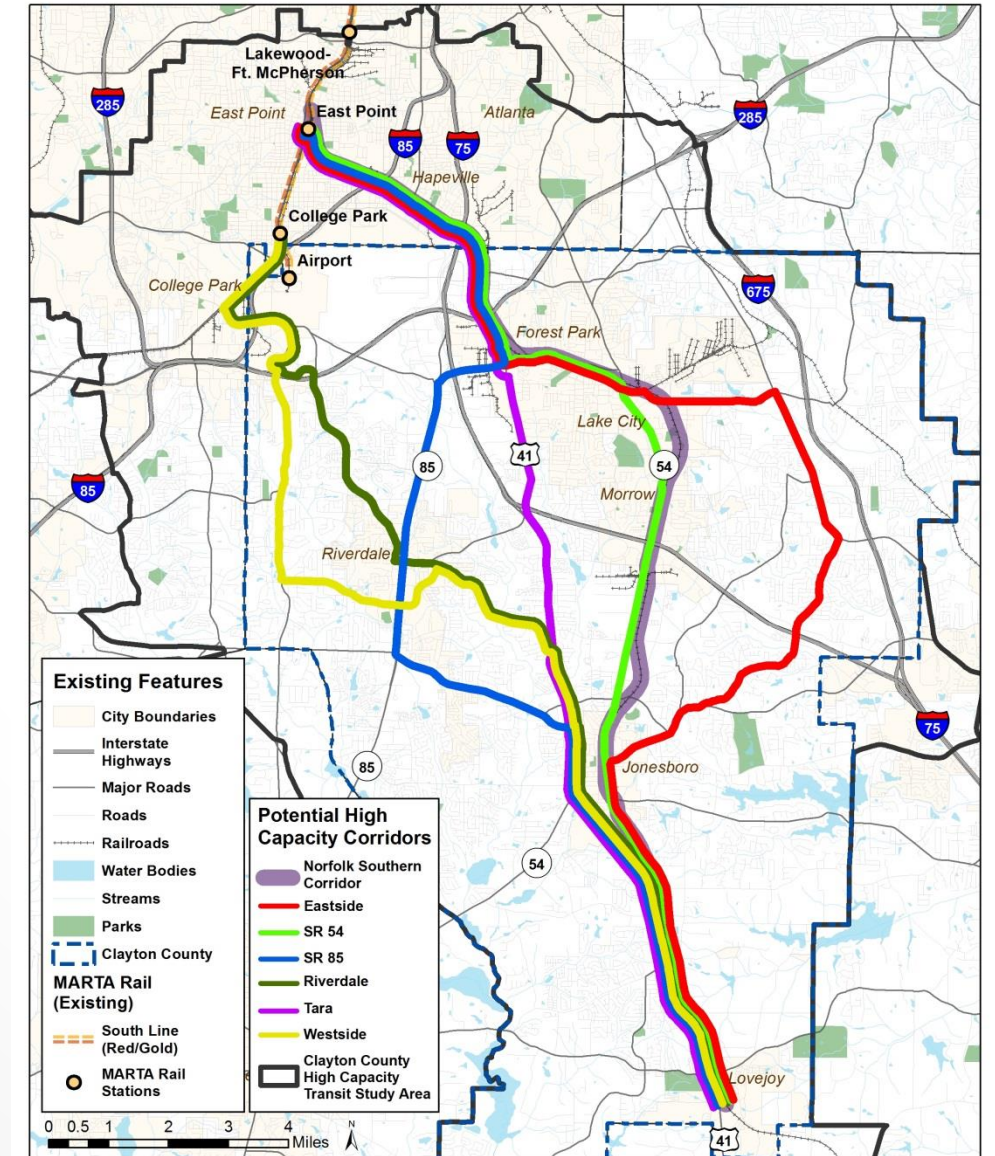
CLAYTON COUNTY TRANSIT INITIATIVE

PROJECT OVERVIEW & STATUS

CLAYTON COUNTY TRANSIT CORRIDORS

- High capacity transit corridors identified in previous planning efforts
- Enhanced transit connectivity from MARTA Rail to Clayton County
- Determine which of these corridors best meet the project needs

- Westside Corridor
- Riverdale Corridor
- SR 85 Corridor
- Tara Blvd Corridor
- SR 54 Corridor
- Norfolk Southern Corridor
- Eastside Corridor



POTENTIAL TRANSIT TECHNOLOGIES



Commuter Rail Transit (CRT)

Typical Characteristics

- Seats **250-1,000 passengers** per train
- Service **ranges up to 50 miles**
- Average **speed of 35-45 miles**
- Stations **spaced 2-4 miles apart**
- At-grade, **exclusive guideway/freight** corridor alignment



Heavy Rail Transit (HRT)

Typical Characteristics

- **Seats 500** passengers per train
- Service **ranges up to 30 miles**
- Average **speed of 30-35 miles**
- Stations **spaced greater than 1 mile** apart
- Fully grade-separated **fixed guideway**

POTENTIAL TRANSIT TECHNOLOGIES



Typical Characteristics

- **Seats 225 passengers** per train
- Service **ranges up to 15 miles**
- Average **speed of 25-35 miles**
- Stations **spaced 0.5-1 mile apart**
- **Exclusive/semi-exclusive guideway** alignment

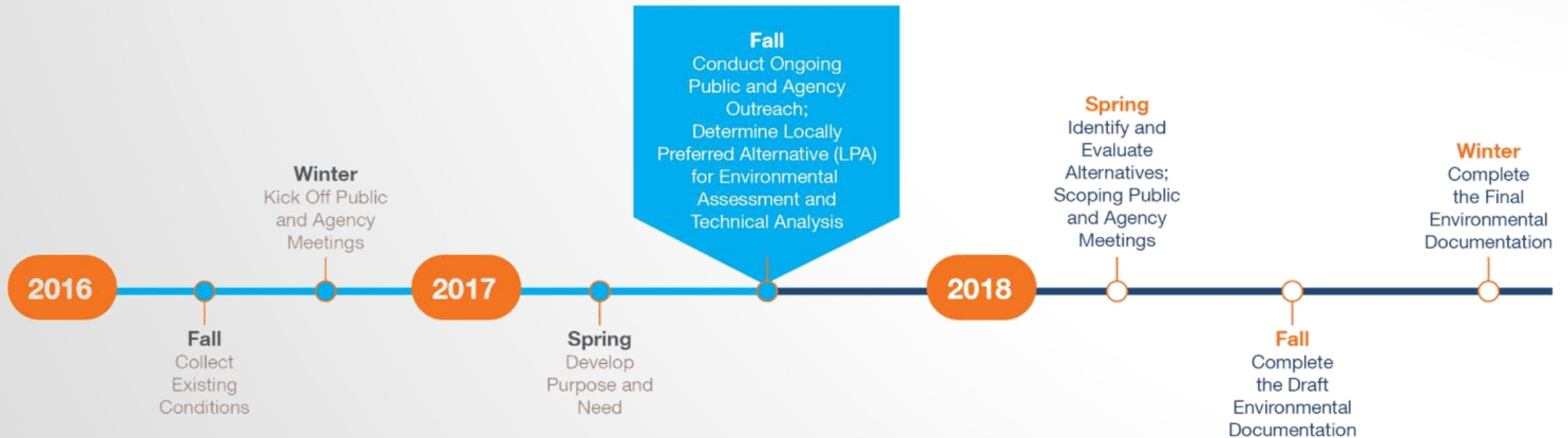


Typical Characteristics

- **Seats 40-60 passengers** per bus
- Service **ranges up to 15 miles**
- Average **speed of 20-30 miles**
- Stations **spaced 0.25-0.5 mile apart**
- **Semi-exclusive guideway** alignment

PROJECT STATUS

- Conducting ongoing public and agency outreach
- Finalizing Purpose and Need
- Refining corridor definitions
- Determining corridor(s) that best meet project needs





CLAYTON COUNTY TRANSIT INITIATIVE

PUBLIC AND AGENCY OUTREACH FEEDBACK

PUBLIC AND AGENCY OUTREACH

- **Technical Advisory Committee (TAC)**
Local, Regional, State and Federal Agencies
- **Stakeholder Advisory Committee (SAC)**
Local Municipalities, Business Organizations, and Stakeholder Groups
- **Citizens Advisory Group (CAG)**
Appointed by Clayton County Commissioners
- Conducted a series of **exercises to identify existing conditions and future needs**
 - Rank importance of major corridors and destinations
 - Indicate where participants live, work, play within Clayton County and the region



PUBLIC & AGENCY OUTREACH

KICKOFF & EARLY SCOPING

- **Technical & Stakeholder Advisory Committee Meetings**
 - TAC: (2) Meetings – November 2016 & January 2017
 - SAC: (2) Meetings – November 2016 & January 2017
- **Public Meetings/Open Houses**
 - (2) Meetings – November 2017
 - (2) Meetings – February 2017
- **Citizen Advisory Group**
 - (2) Committee Meetings – April & July 2017

DATA CAPTURE



- **Clicker Exercise**

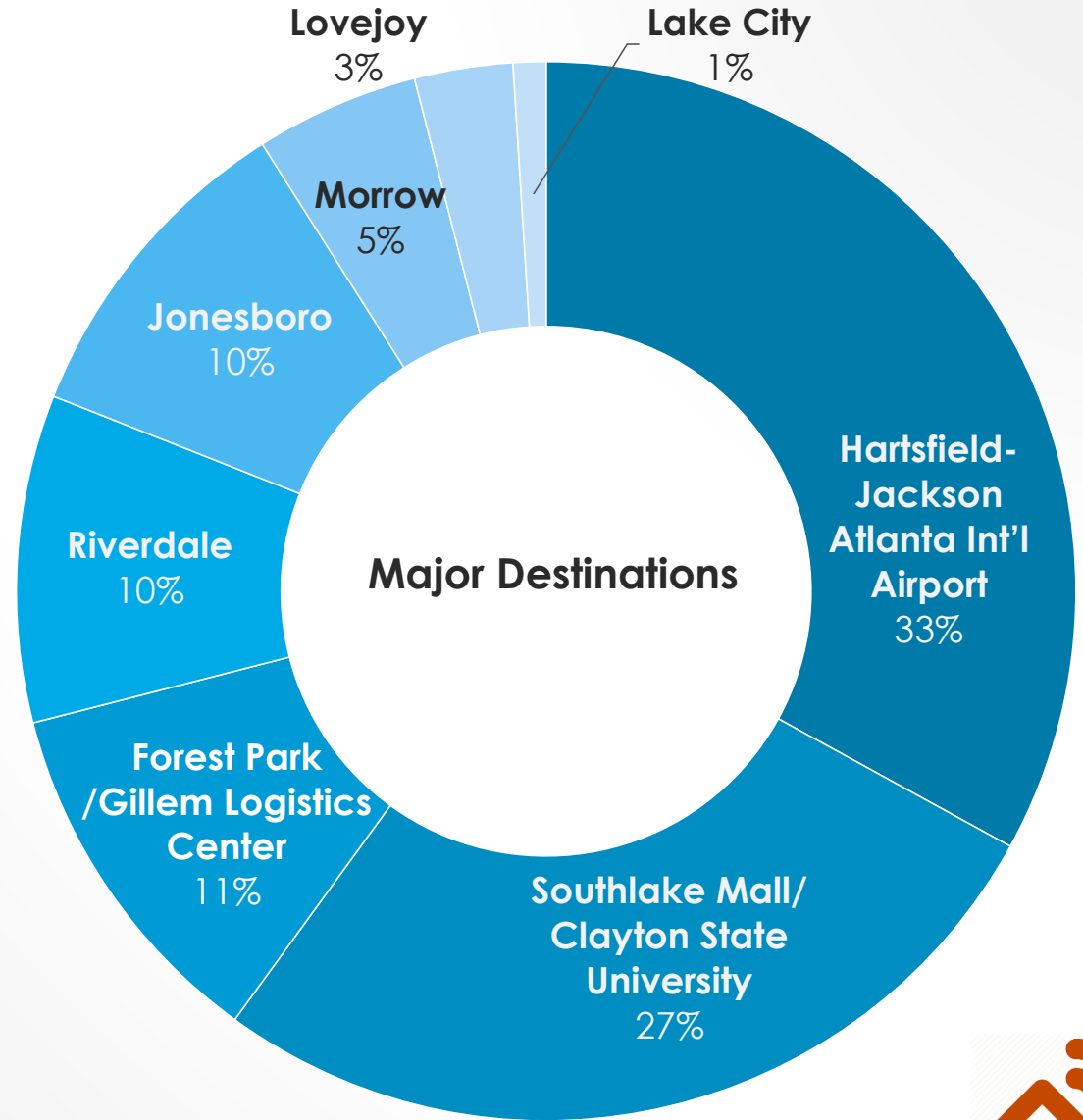
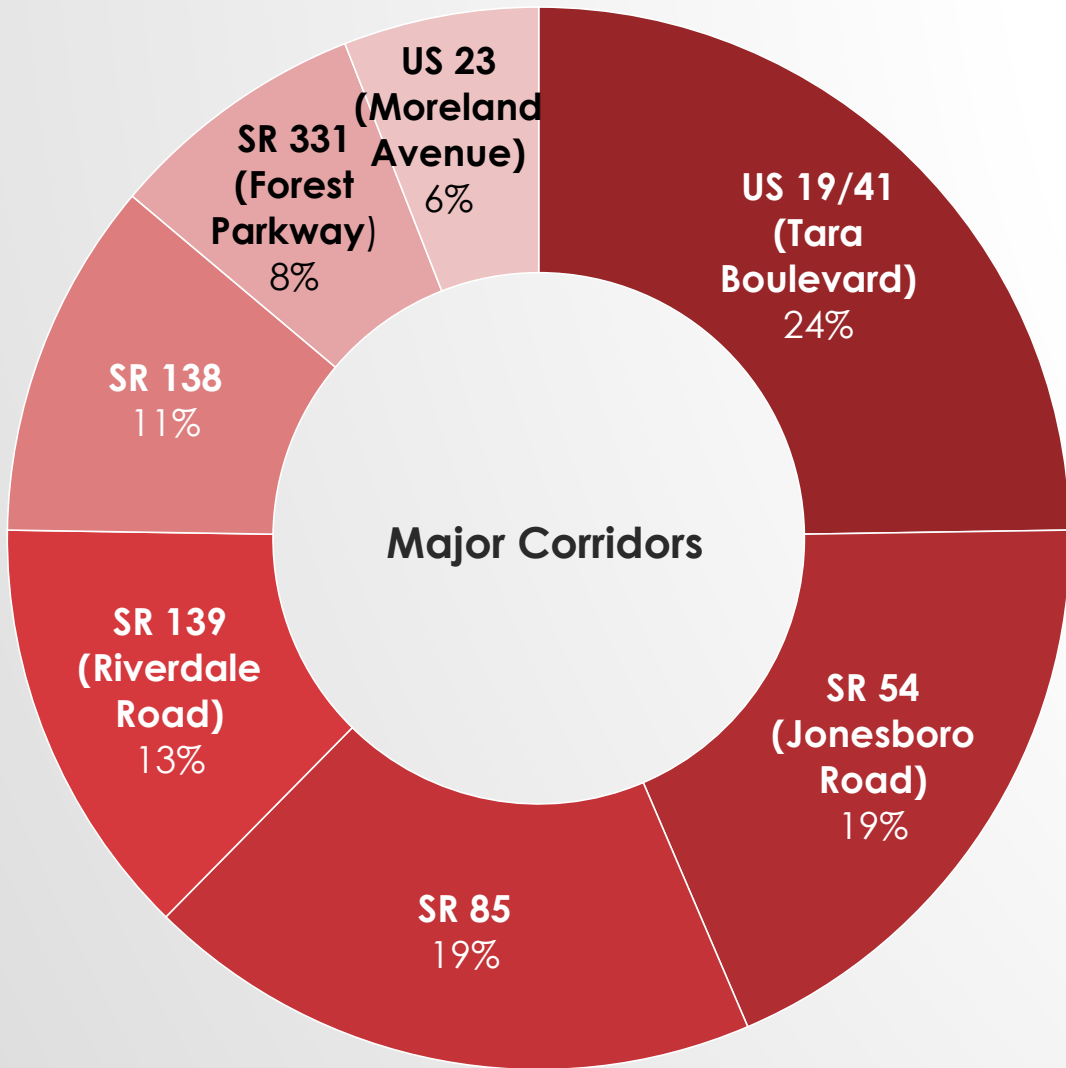


- **Mapping Activity**

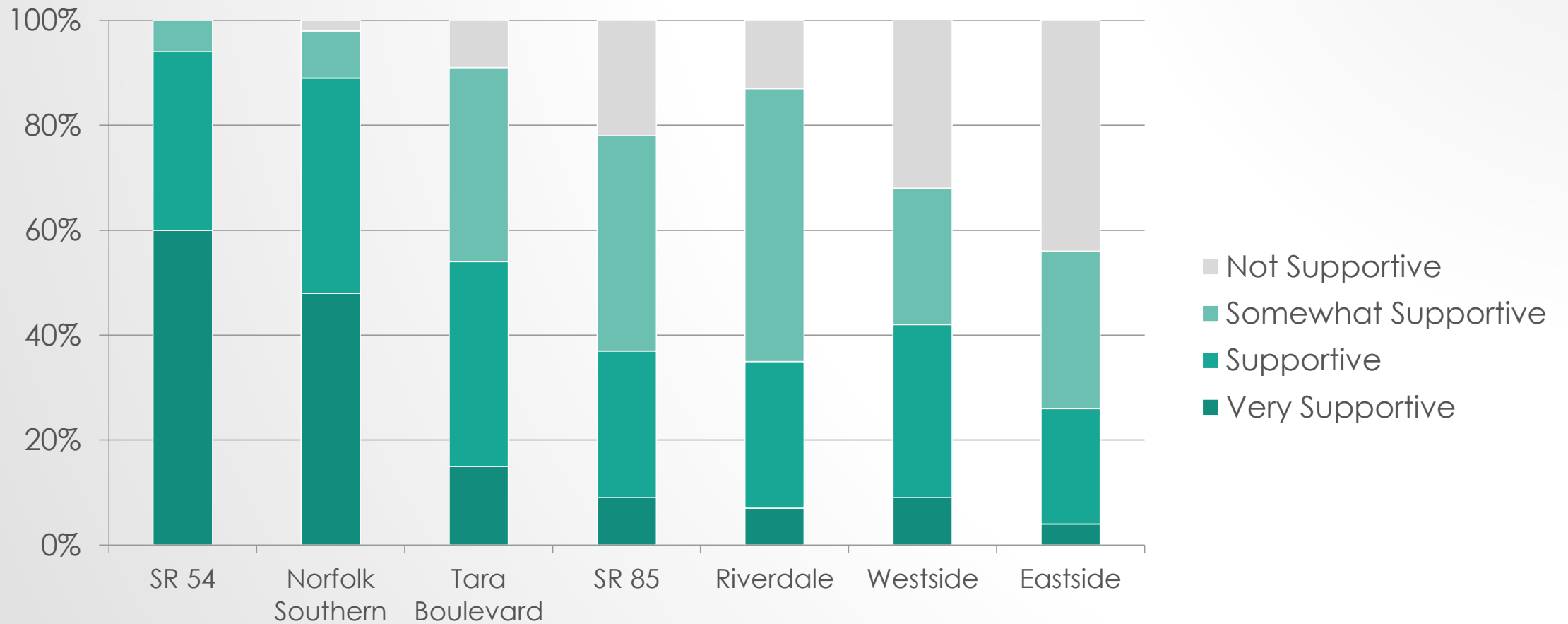


- **Technical Analysis**
 - i.e. Ridership, Socioeconomic Demographics, Corridor Alignments & more

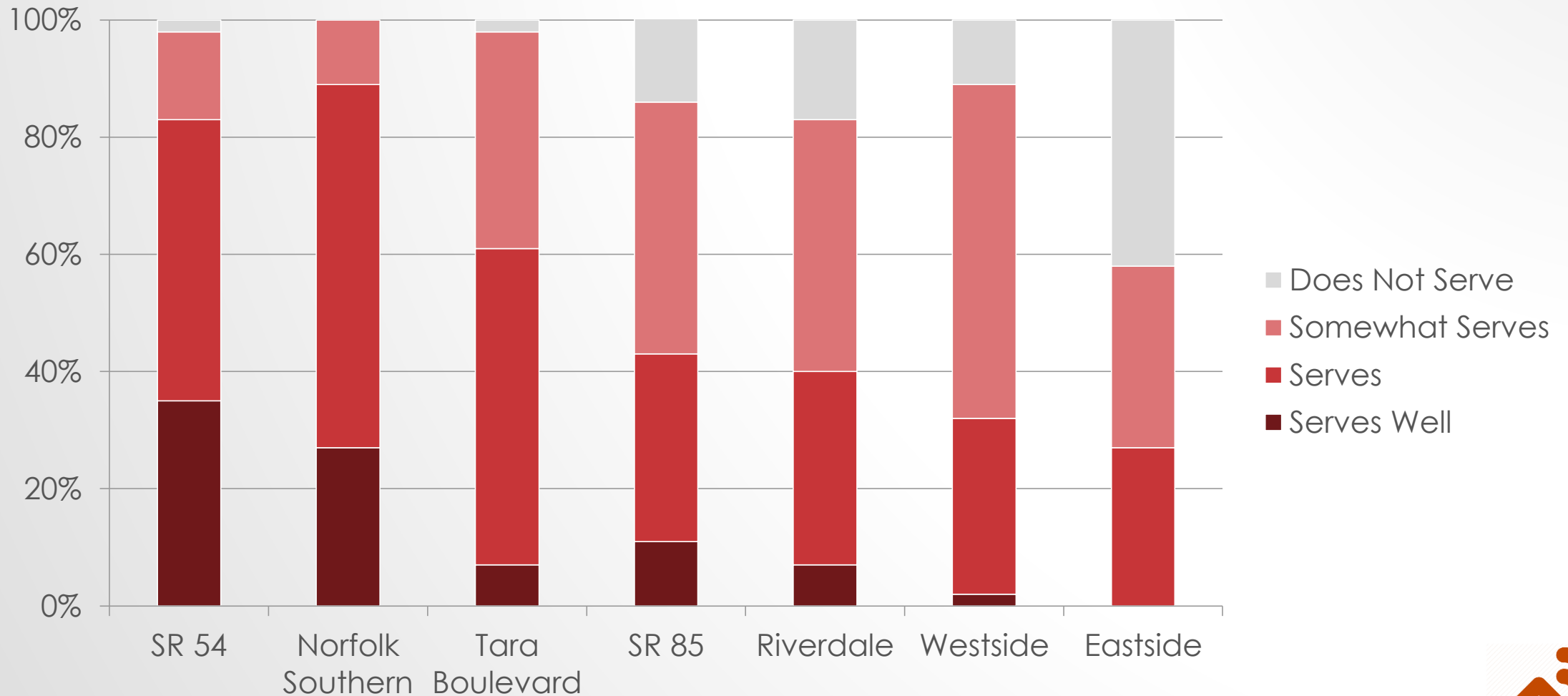
TOP RANKED CORRIDORS & DESTINATIONS



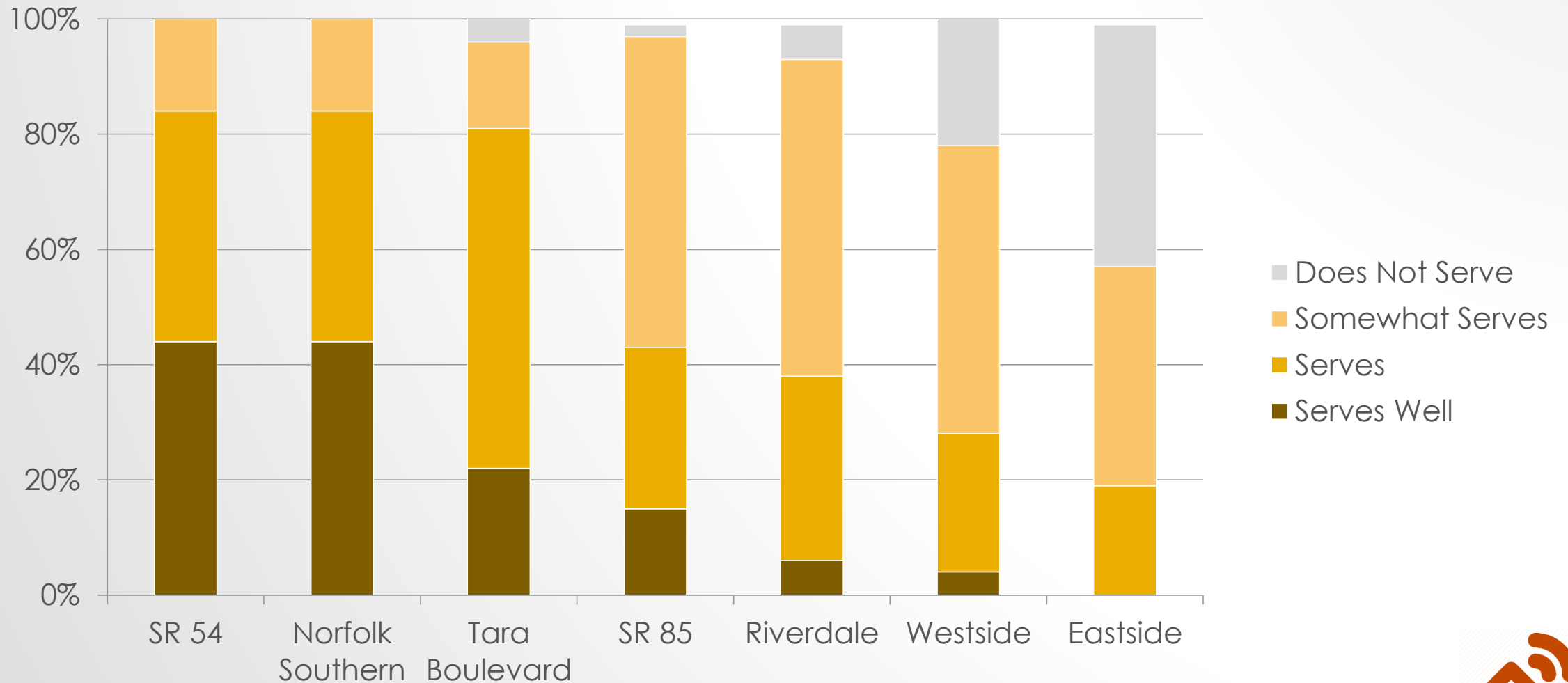
CONNECTIVITY TO KEY ACTIVITY CENTERS & ECONOMIC DEVELOPMENT AREAS



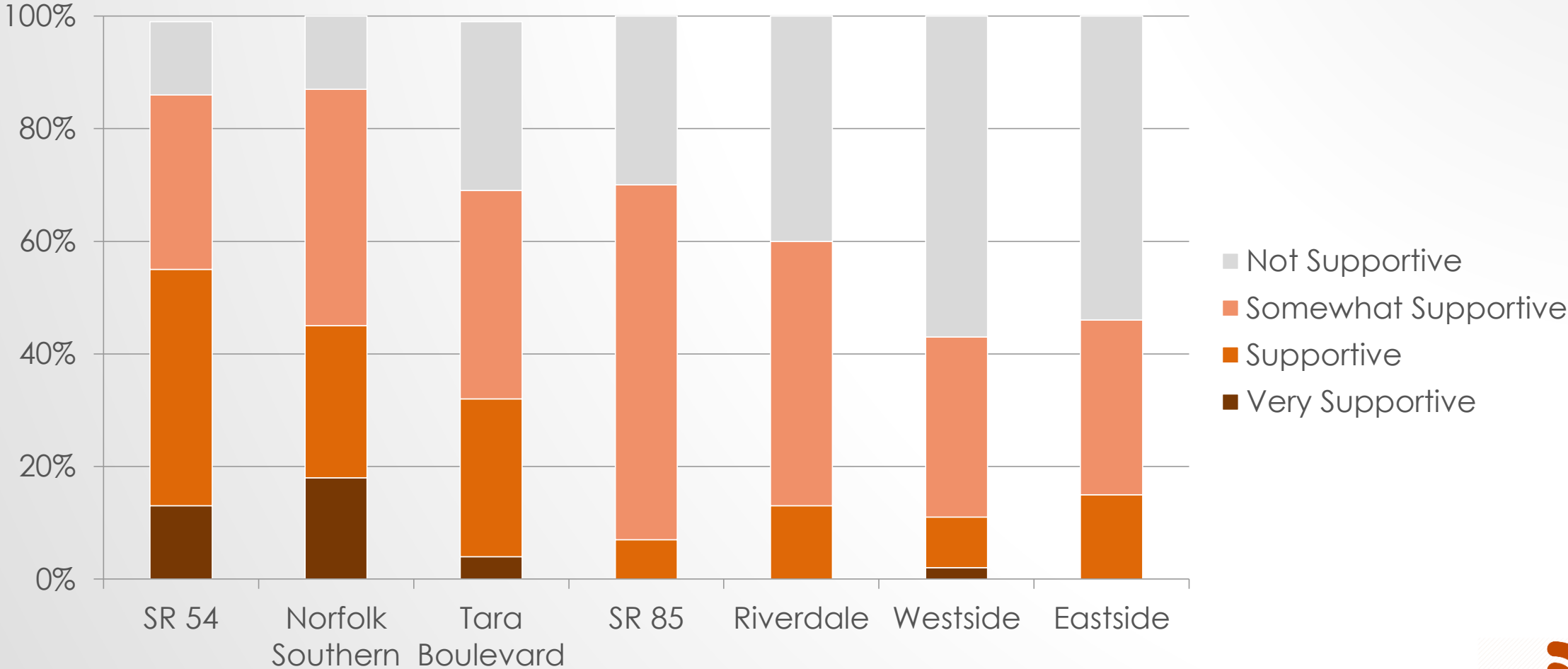
SERVES TRADITIONAL TRANSIT MARKETS



SERVES COMMUTER TRANSIT MARKETS

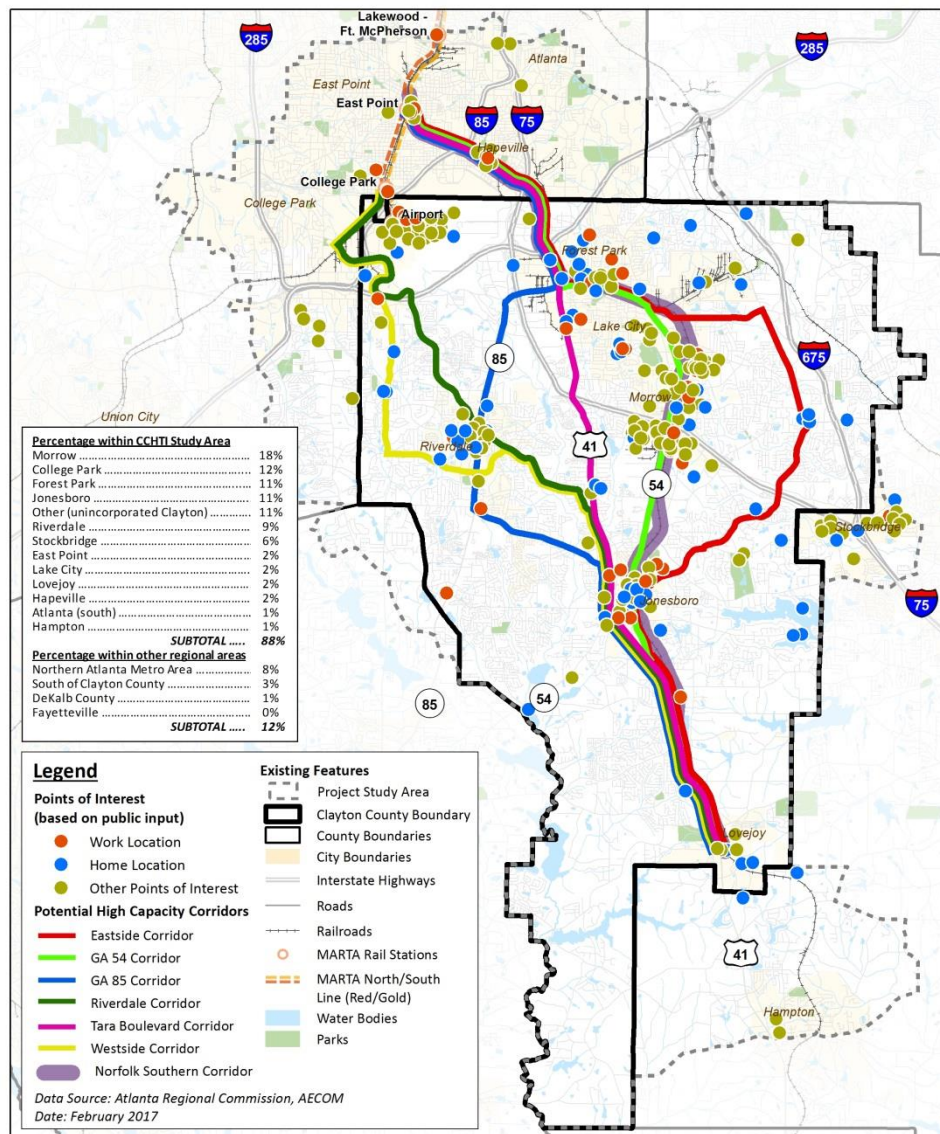


PEDESTRIAN AND COMMUTER ACCESS

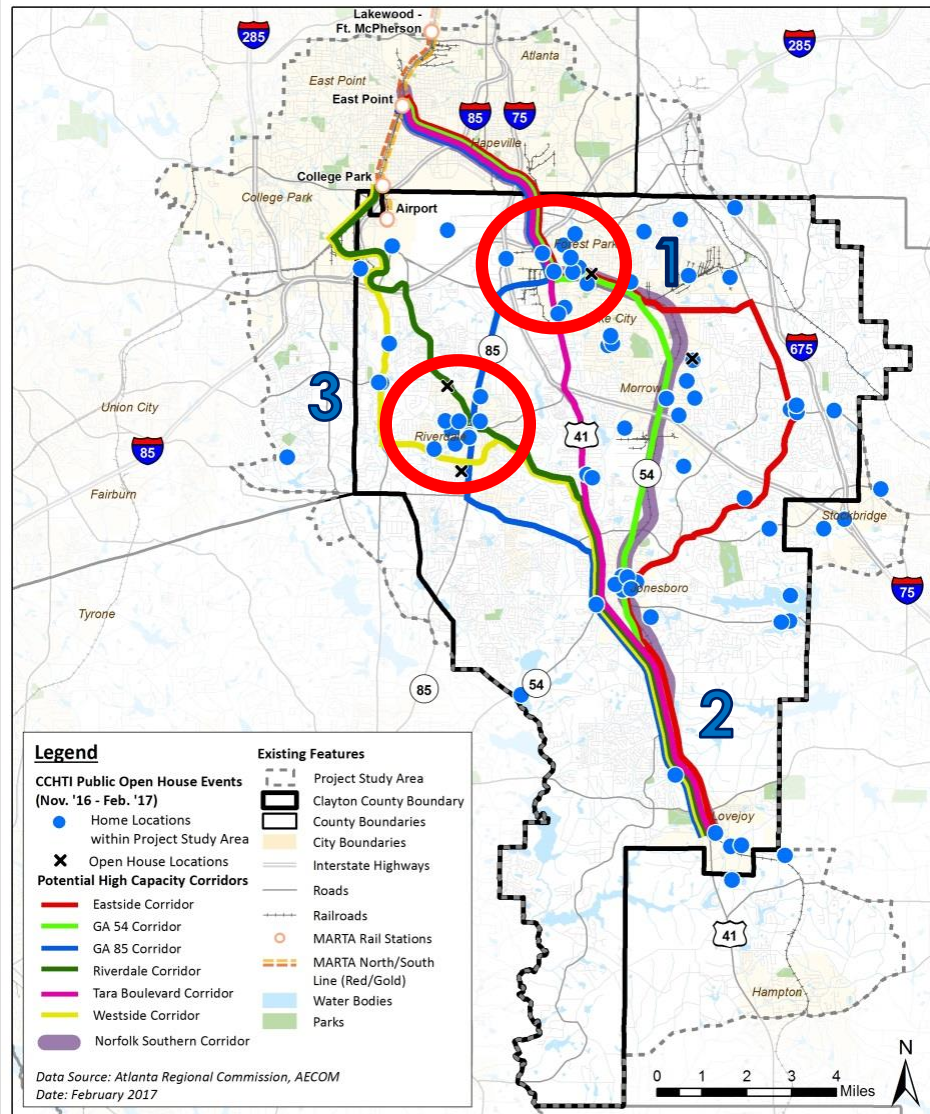


LIVE, WORK AND PLAY EXERCISE

- 287 attendees participated at 4 public meetings
- Placed stars on study area maps showing where they live, work, and play
- Locations reported included both within Clayton County and other areas of the Atlanta region



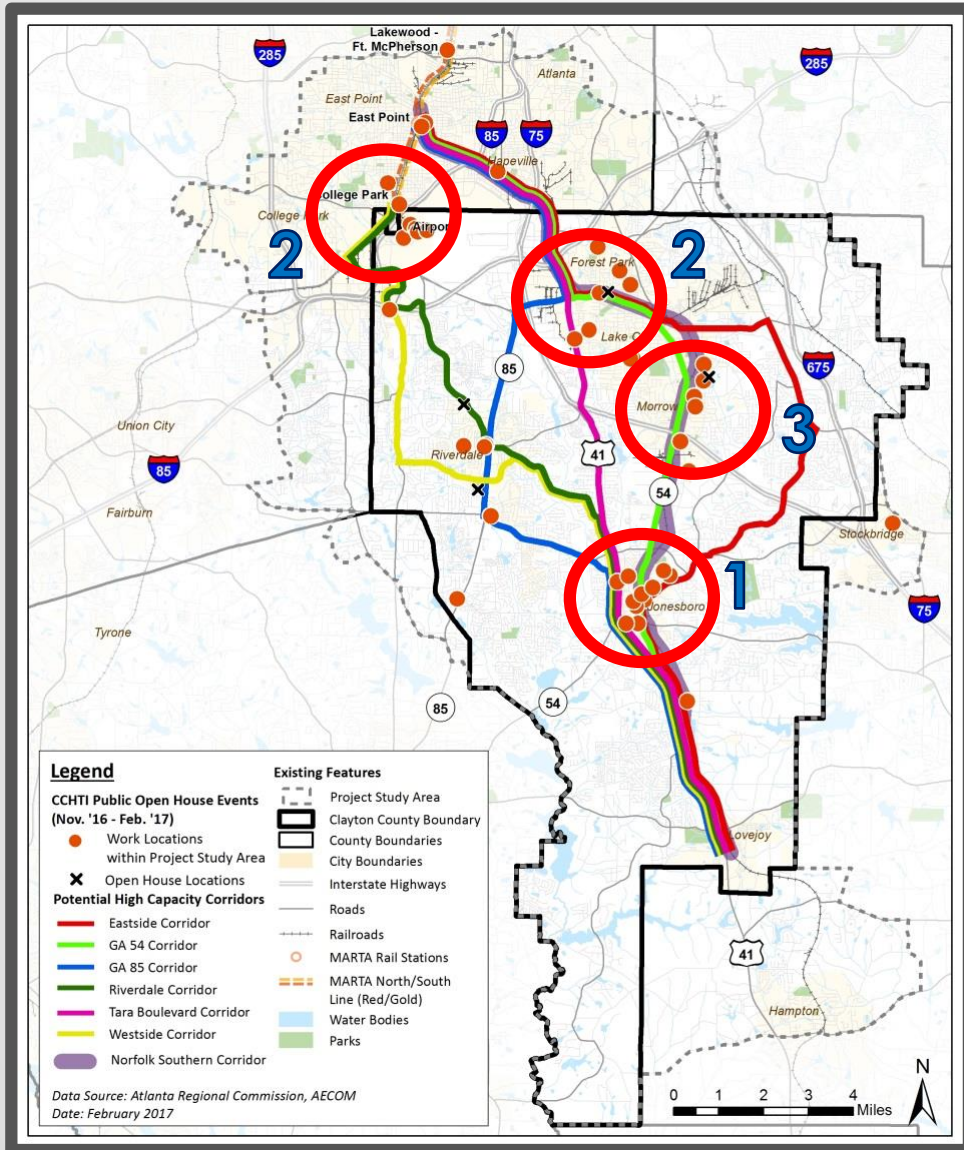
TOP 3 LIVE LOCATIONS



- Top 3 **Live** locations reported:
1. Forest Park (25%)
 2. Unincorporated Clayton County (23%)
 3. Riverdale (12%)



TOP 3 WORK LOCATIONS

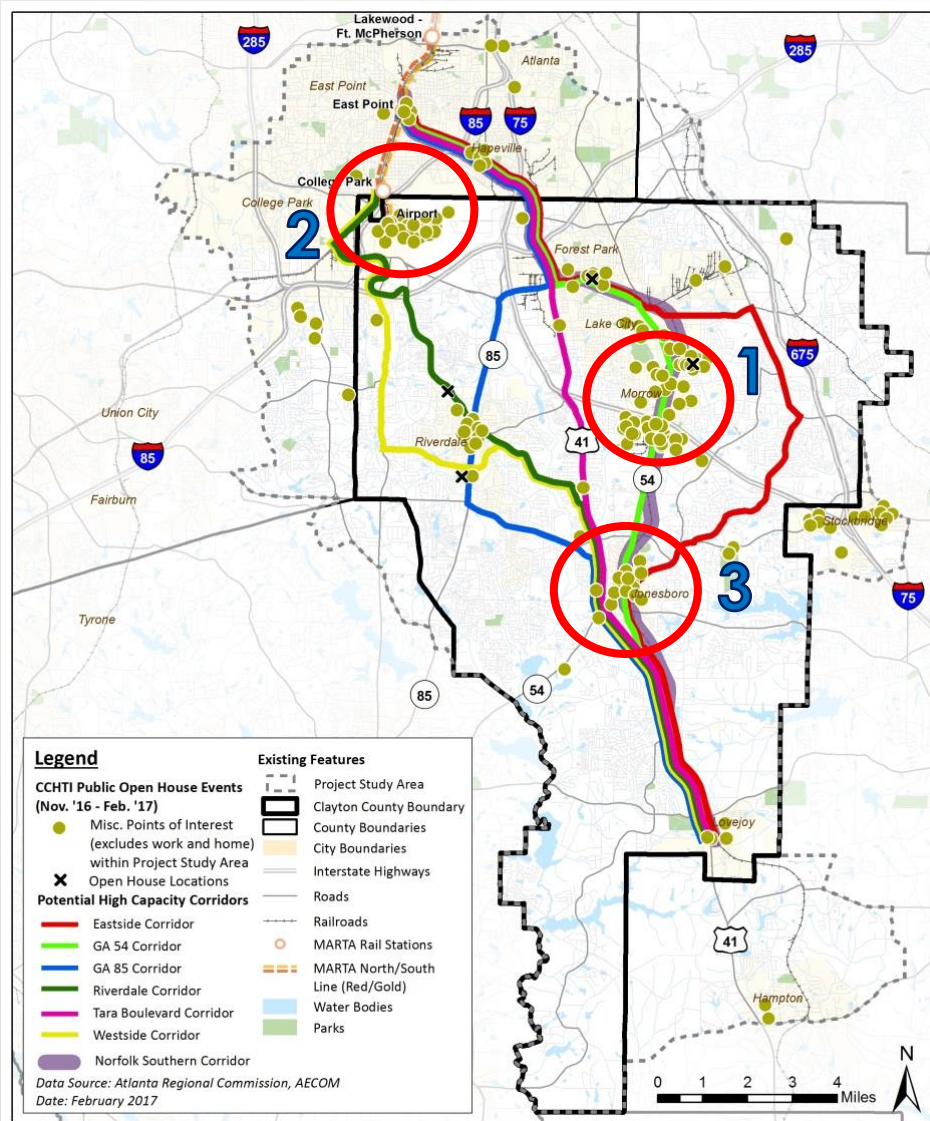


Top 3 **Work** locations reported:

1. Jonesboro (19%)
Atlanta (19%)
2. Forest Park (14%)
College Park (14%)
3. Morrow (10%)



TOP 3 PLAY LOCATIONS



- Top 3 **Play** locations reported:
1. Morrow (Southlake/Mt. Zion) (25%)
 2. College Park (Airport) (15%)
 3. Jonesboro (9%)



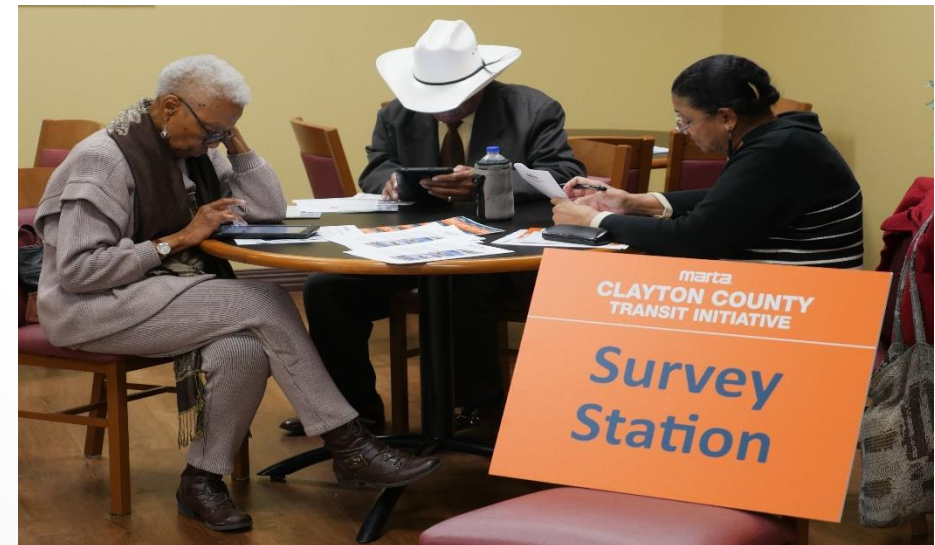


CLAYTON COUNTY TRANSIT INITIATIVE

PROJECT SURVEY RESULTS

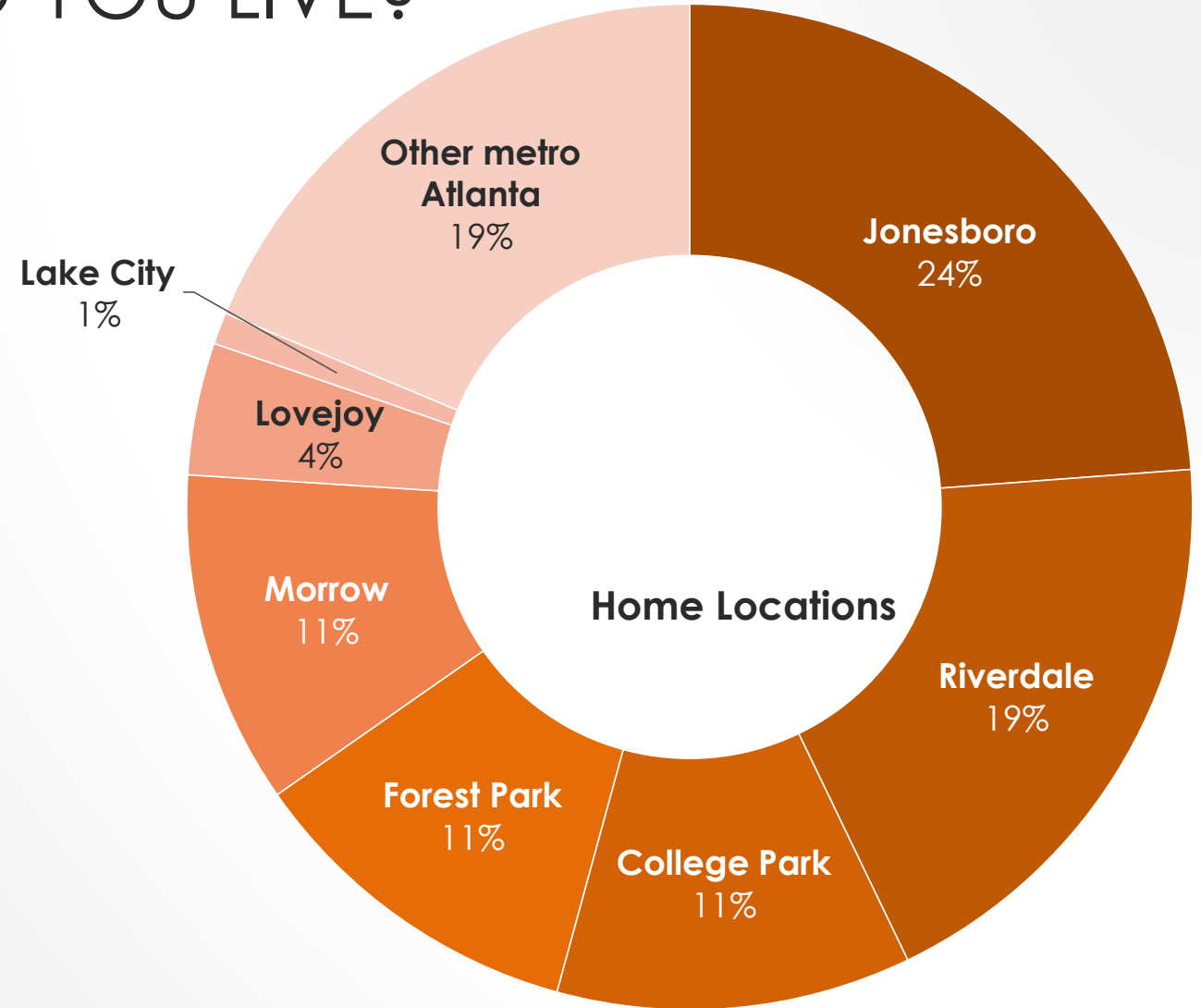
PROJECT SURVEY OVERVIEW

- Survey period: November 2016 – April 2017
- Received input residents and stakeholders about existing and future transportation expansion in Clayton County
- Approximately 700 surveys completed



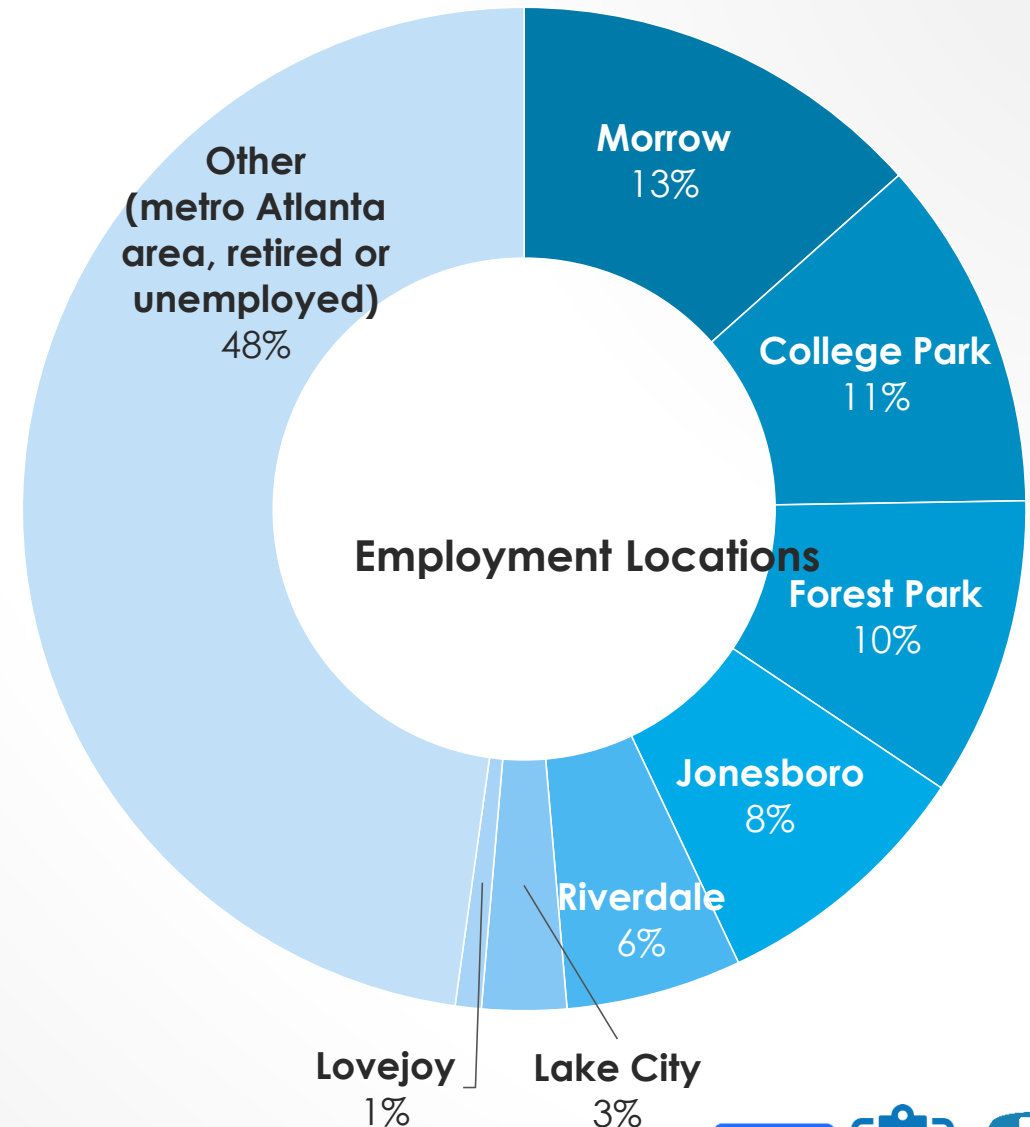
WHERE DO YOU LIVE?

- Approximately 80% of survey participants were Clayton County study area residents
- 20% were from other parts of the metro Atlanta region



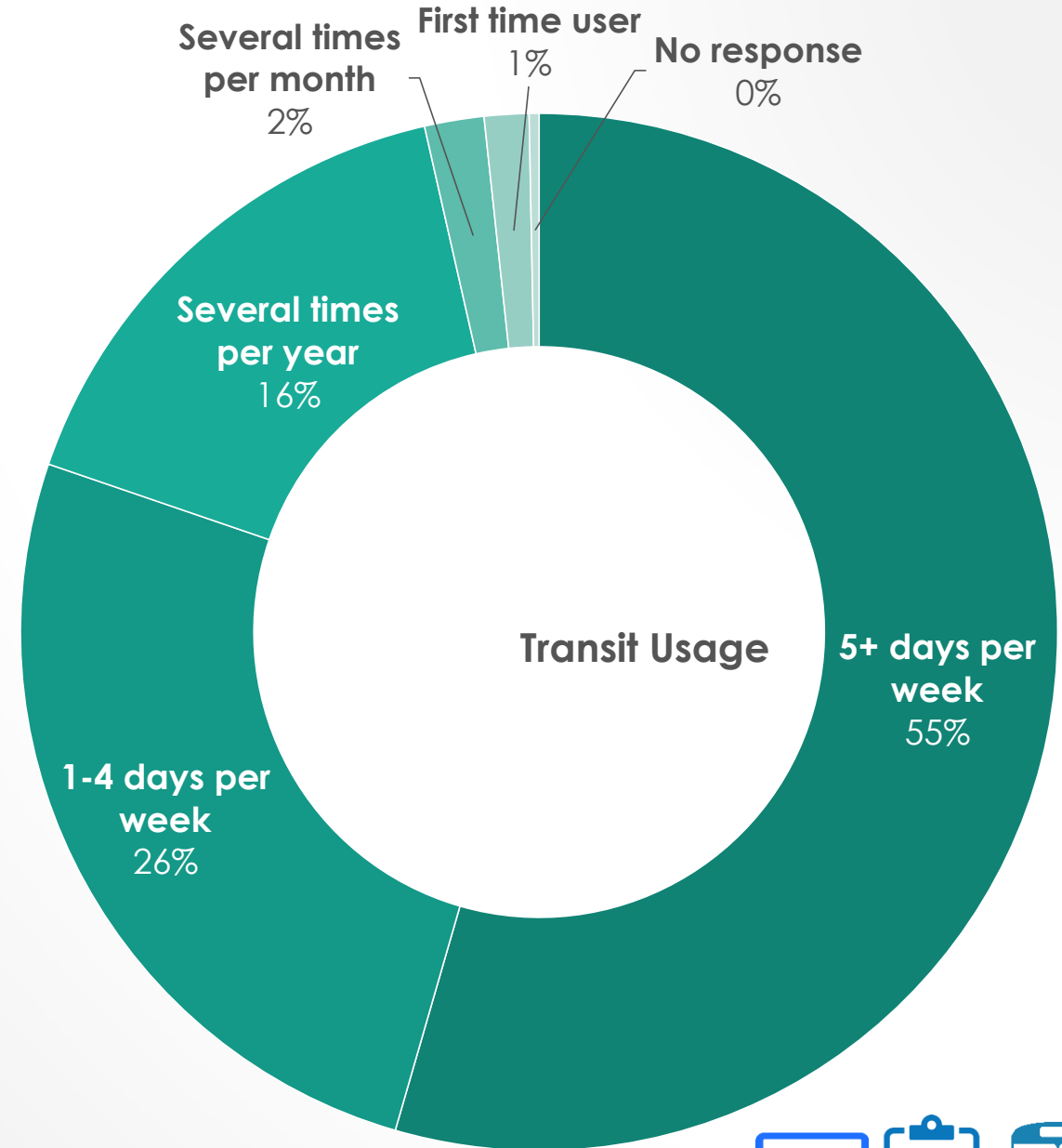
WHERE DO YOU WORK?

- Approximately 50% of survey participants stated they work within the Clayton County study area
- Remainder work in other parts of the metro Atlanta region, or are unemployed or retired

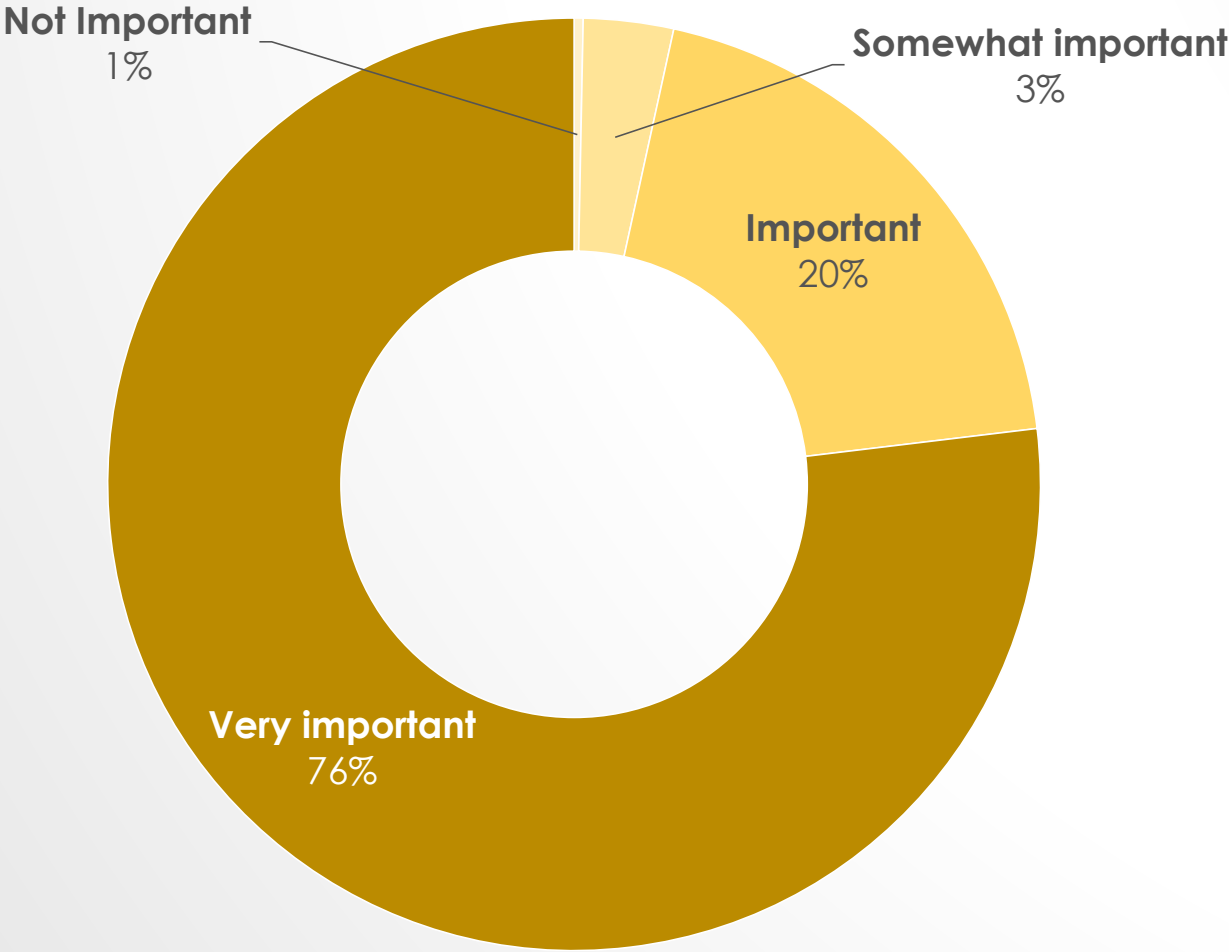


HOW OFTEN DO YOU RIDE MARTA?

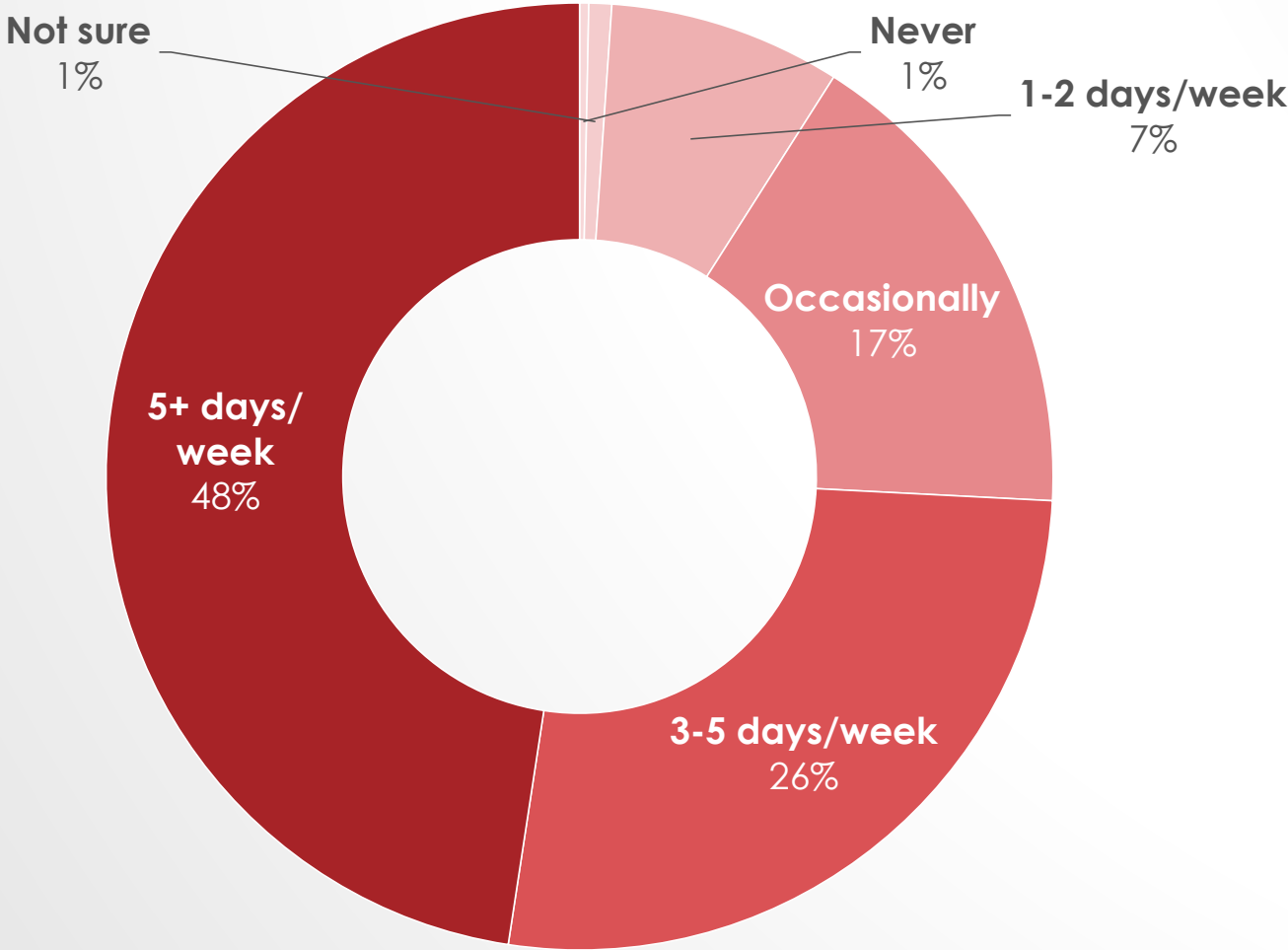
- Over 50% of survey participants utilize MARTA bus service as their primary mode of transportation, and utilize it five or more days a week



EXPAND HIGH CAPACITY TRANSIT SERVICE INTO CLAYTON COUNTY?



HOW OFTEN WOULD YOU USE HIGH CAPACITY TRANSIT SERVICE?





CLAYTON COUNTY TRANSIT INITIATIVE

PURPOSE AND NEED

DEVELOPMENT OF PURPOSE AND NEED

Public Outreach

Public Input

Data Collection

Purpose and Need

+ Public Open Houses



2 Rounds of meetings
200+ Attendees

+ Technical Advisory Committee

+ Stakeholder Advisory Committee

+ Citizens Advisory Committee



Online Survey



Paper Survey



Onboard Survey



Mapping Activity



Clicker Exercise



Technical Analysis



- Population and
Employment Density

- Trip Activity

- Transit Ridership

- Major Activity Centers
and Land Use Mix



Provide Greater Access
to Jobs and Education



Improve Regional
Connections & Travel
Options



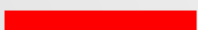


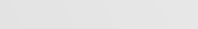
Address Growing Demand
for Transit

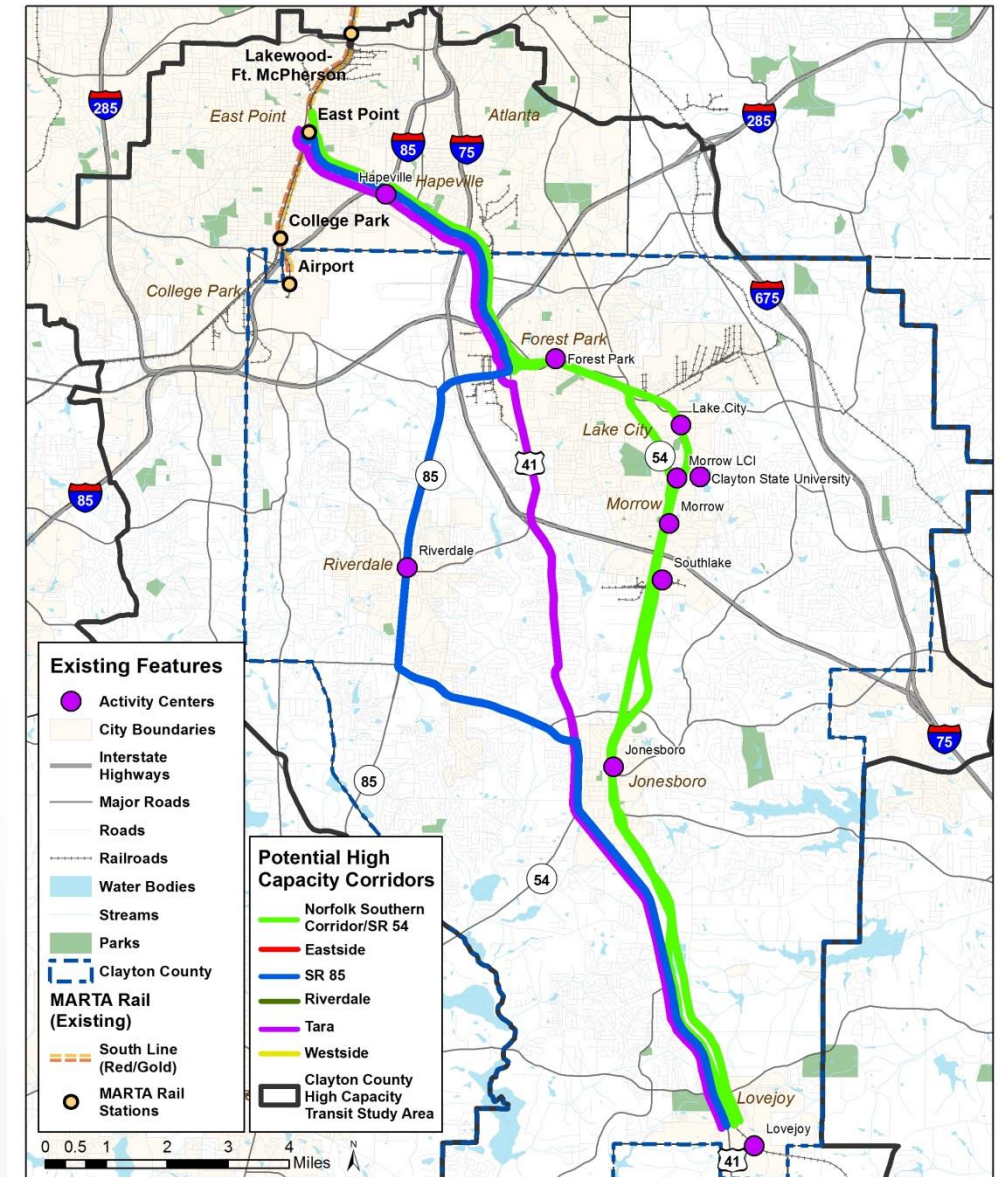


Support Land Use &
Economic Development

REFINED CORRIDOR DEFINITIONS

- Incorporates baseline data and input received from public and stakeholders
- Considers major activity centers, adjacent land uses and development patterns
- Connections to MARTA rail
- Combines corridors adjacent to each other (i.e. Norfolk Southern/SR 54)

-  Norfolk Southern Corridor/SR 54
-  Eastside
-  SR 85 Corridor
-  Riverdale Corridor
-  Tara Blvd Corridor
-  Westside Corridor





CLAYTON COUNTY TRANSIT INITIATIVE

SUMMARY OF KEY FINDINGS/NEXT STEPS

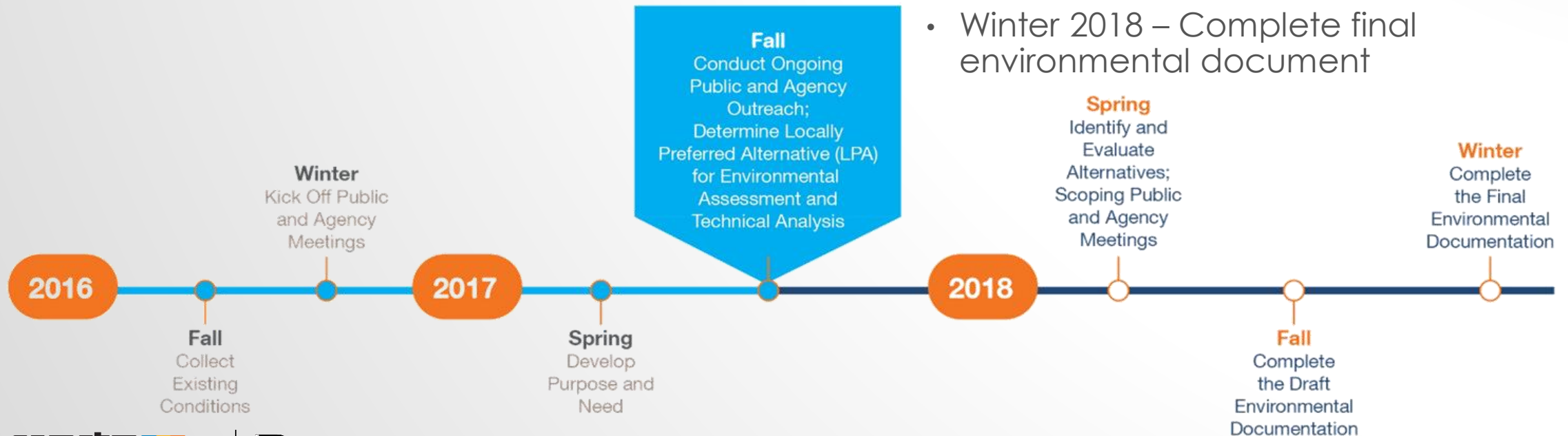
KEY TAKEAWAYS

- SR 54, Norfolk Southern and Tara Blvd corridors ranked highest in most exercises
- Most live, work and play locations were reported along these corridors
- High demand for existing transit use and need for expanded high capacity transit service
- Public input and data collected both demonstrate project need



CLAYTON COUNTY TRANSIT INITIATIVE

- Fall 2017
 - Conduct public Open Houses
 - Determine Locally Preferred Alternative (LPA)
- Winter 2017 - Enter into scoping and environmental
- Spring 2018
 - Refine mode and alignments
 - Evaluation & screening analysis
- Fall 2018 – Complete draft environmental document
- Winter 2018 – Complete final environmental document





CLAYTON COUNTY TRANSIT INITIATIVE

Q & A

Answers Will Be Provided To Select Questions
Submitted During Presentation



CLAYTON COUNTY TRANSIT INITIATIVE

Thank You for Your Time and Support

<http://www.itsmarta.com/clayton-county-overview.aspx>